

“Supporting the Marque”
By
Keeping It Cool

The Problem:

The existing water gallery plugs, on the exhaust side of the block, impede the flow of water. [Picture 1.](#)

The Solution:

Remove the existing plugs and replacing them with JMB modified plugs. [Picture 2.](#)

The Method:

JMB have manufactured a shorter flanged plug with a domed front end which, when fitted, encourages the water to flow into the block; improving circulation around the liners. We would also suggest a small countersink to guide the water effectively. [Picture 3.](#)

Removal of the existing plugs is the most difficult part of the modification, as the plugs may have been in place for many years. Locally heating the aluminium around each plug and the use of an impact wrench greatly helps the extraction. The gallery threads may need cleaning out with a BSP tap prior to fitting the new plugs. Care should be taken to remove all swarf and debris. The plugs are supplied complete with a copper sealing washer and should be coated with a pipe sealant before final assembly.

N.B.

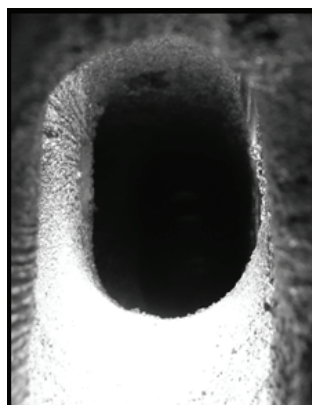
Prior to undertaking this modification, the existing plugs should be measured as occasionally 5/8" BSP plugs were fitted. If this is the case, modified 5/8" BSP plugs are available as an alternative.

OD of Existing Plug= 26.44mm / 1.041" = 3/4" Plug Required (Standard)

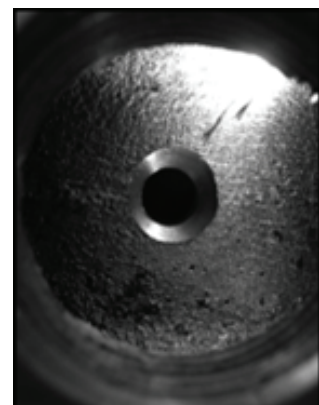
OD of Existing Plug= 22.91mm / 0.902" = 5/8" Plug Required (Alternative)



Picture 1



Picture 2



Picture 3

Should you require any further assistance, please do not hesitate to contact us.